



Station work sites	2
Euston approaches	3
Network Rail station	4
Meanwhile use	5
Buzz about Euston	6

## UPDATE ON PLANS FOR EUSTON

In October, the Government announced changes to the national HS2 scheme. Some of these changes affect how the HS2 station at Euston will be built.

The Government announced that HS2 would no longer be built between Birmingham and Manchester, but restated its commitment to completing HS2 between Birmingham and central London with a rescoped Euston station.

As outlined in our previous newsletter, HS2 will not proceed with the full construction of Euston station in the next two years due to affordability issues. However, the Department for Transport

has begun work to deliver comprehensive regeneration across the Euston campus led by a new development body and using private funding to deliver a smaller and less costly HS2 station. This new organisation will support Government ambitions to maximise the number of homes, businesses and job opportunities in the area and ensure that this approach is supported by people who live, work and travel in and around Euston.

In this newsletter you will find information on the latest work taking place to deliver the connection to Euston, progress made on managing work sites where construction has paused and the latest on the redevelopment of the existing Network Rail station.

While work takes place to set the future direction for Euston, HS2 Ltd continues to keep work sites where work has paused safe and secure.

HS2 Ltd is working closely with The Euston Partnership and the local community to identify opportunities to agree temporary community uses and activities on these sites.

The planned redevelopment of the existing Network Rail station (known as RECS – Redevelopment of Euston Conventional Station) will continue. Network Rail is developing a scheme for RECS that will provide a better, smoother experience for passengers, while replacing aging station infrastructure in an affordable way.

## WORK UPDATES: STATION WORK SITES

While construction of the HS2 station is paused, work continues to deliver the connection to Euston and provide meanwhile uses. Mace Dragados Joint Venture (MDjv) continues to construct the new traction substation, prepare the new interim taxi rank for use and carry out utilities work.

### 1 & 2: Main HS2 Station site

Work in the main station site (former National Temperance Hospital) has been stopped.

### 3: Old Maria Fidelis School site

The construction of the Euston Skills Centre has now been completed and handed over to Camden Council. Community growing beds in the outside space alongside North Gower Street will be completed in spring.

### 4: Cobourg Street

In October 2023 MDjv began work to construct a new sewer, enabling the existing Victorian brick sewer that runs beneath Cardington Street to be taken out of use. To facilitate this, Cobourg Street is closed to vehicles. The footpath to

Euston Street will not be accessible until late April 2023.

### 5: Traction Substation

The structure of the building, which will be used to power the Northern Line, has been built. MDjv will now continue to fit out the internal facilities needed for operation of the building. This work will continue into 2026 and will be taking place within the existing hoardings.

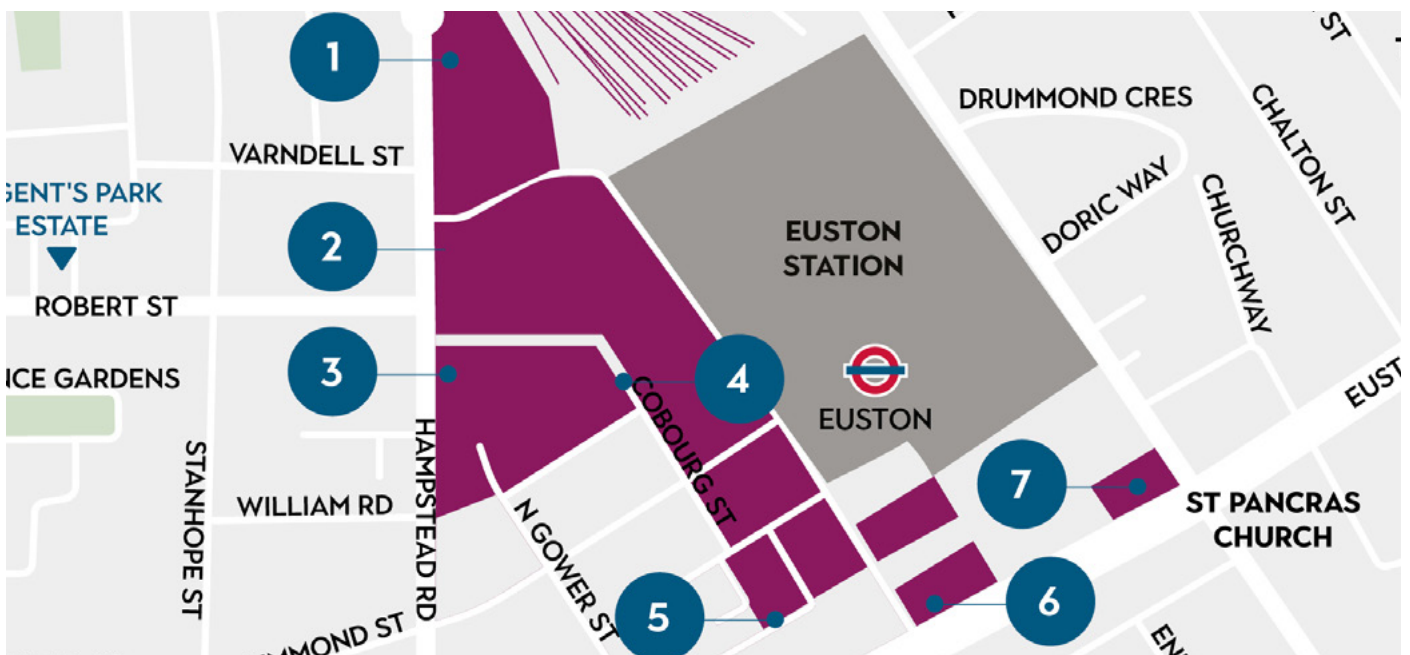
### 6 & 7: Western and Eastern Interim Taxi Ranks

The main work to construct the interim taxi rank facility in the east of Euston Square Gardens has been completed. When the new taxi facility opens in the East Gardens, the Assisted Travel Facility and private hire vehicle bays, dedicated to those using Euston Station, will remain in the West Gardens.

MDjv and HS2 are working jointly with Network Rail, TfL and Camden Council to agree when the interim taxi rank can start operating in 2024.

### UK Power Networks (UKPN) Utility Work

UKPN delivered utility work along Hampstead Road and the surrounding areas in 2023. Work will continue along North Gower Street and Euston Road from February, and will return to Hampstead Road later in the year. Where possible, this work will take place simultaneously. Pedestrian access will be maintained and traffic management arrangements will be in place. Further works will need to take place in Gower Place, Gordon Street, Eversholt Street and surrounding areas in 2024.



## WORK UPDATES: EUSTON APPROACHES

While the construction of the HS2 station is paused, work continues in the Euston approaches to deliver the connection to Euston and provide meanwhile uses. Skanska Costain STRABAG (SCS) continues work to extend Granby Terrace and Hampstead Road bridges and prepare for tunnelling.

### 1: Euston Cavern

Ongoing work at track-level will continue in the Euston Cavern area. SCS is constructing the foundations for the future Cavern headhouse after a successful concrete pour was completed in December 2023.

In spring 2024, a new pedestrian access will be installed to their work site at the northern end of Park Village East. The hoarding of the lorry lay-by will be extended to just south of 1 Park Village East to enclose the new access and reduce noise and visual impacts.

This access will be used 24/7 once tunnelling begins, which is currently scheduled for 2026.

### 2: Mornington Street Bridge

Mornington Street Bridge reopened to vehicles in January 2024 with a 3-tonne weight limit in place. SCS and Network Rail will continue to monitor the bridge while critical work beneath the bridge continues.

Once tunnelling starts in 2026, the bridge will be closed for five years. SCS will maintain access for pedestrians and cyclists throughout this period.

### 3: Euston Scissor Box

Work will continue to construct the Euston Portal. The Euston Portal is where the HS2 trains will emerge from the tunnels into the Euston Scissor Box.

This work involves excavation, steel framework and concrete pours.



### 4: Granby Terrace Bridge

Work will continue to extend Granby Terrace Bridge across the railway cutting and divert utilities away from Hampstead Road. SCS plans to start building the extension for the bridge in May 2024. The bridge will remain closed to the public until the work has been finished, which is currently programmed for 2031. The bridge cannot safely be opened to vehicles or pedestrians while major construction work is being carried out in this area.

### 5: Hampstead Road

Piling, excavations and utilities work continues behind the site hoarding on Hampstead Road. This is an active work site which means the western footpath and bus stop B will remain closed.

### 6: Vehicle holding area

The vehicle holding area will be in operation until 2033. This avoids

lorries queuing in streets near work sites.

### UK Power Networks (UKPN) Utility Work

A new UK Power Networks cable route will be installed from Lidlington Place to Varndell Street, to replace the existing route next to Hampstead Road.

For the duration of the road closure, vehicles travelling between Stanhope Street and Hampstead Road are being diverted via Mackworth Street, Harrington Street and Varndell Street. Vehicles will not be able to turn left into Varndell Street from Hampstead Road. Access for pedestrians will be maintained.

Once work has finished in this location, further work will be needed on the corner of Varndell Street and Hampstead Road. Further information will be provided nearer the time.

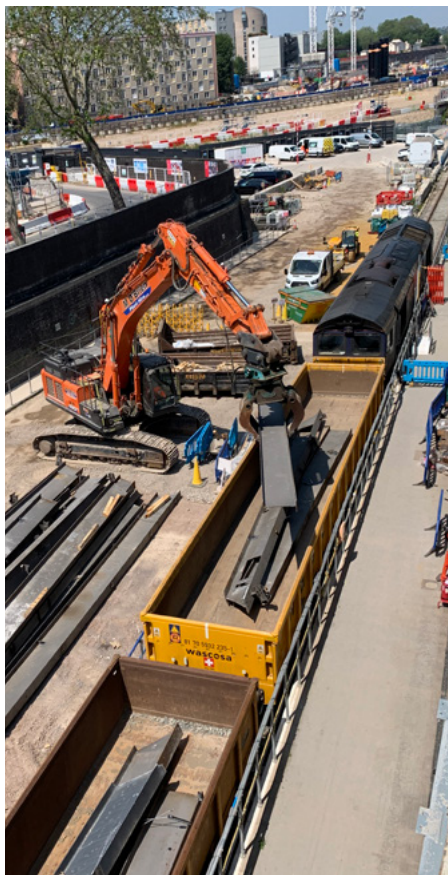
## NETWORK RAIL

### Update on the Redevelopment of Euston Conventional Station (RECS)

Network Rail continues to develop plans to upgrade the existing London Euston station. This project is known as the Redevelopment of Euston Conventional Station (RECS).

These major upgrades will accommodate current and future demand on the West Coast Mainline and provide a better, smoother experience for passengers.

This will be flexible to accommodate future Euston developments as well as delivering vital upgrades that are needed now. Network Rail continues to work with the Department for Transport and partners to make sure the final design is the best option for Euston passengers and makes best use of taxpayer money.



### Work to prepare Euston for HS2

In the second half of last year, the team at Network Rail who are preparing the existing station to allow the construction of the HS2 station completed the following:

- Engineers continued to make good progress on the construction of an interim façade on the western side of the station structure to protect the building from the elements.
- Construction continued on the new railway access point into Clarkson Row. Four consecutive weeks of work in the lead up to Christmas saw teams setting up a crane, digging foundations, improving drainage, piling and removing a parapet wall. When completed, the access point will provide a new, safer way for engineering teams to access key points of the track leading into Euston.
- Network Rail removed 220 tonnes of scrap steel from the work site at Euston via rail, using 40 engineering train wagons loaded with 278 separate sections of steel. This meant they were able to reduce the number of lorries using local roads.
- Mornington Street bridge successfully reopened to road traffic under 3 tonnes in January, following 14 months of bridge strengthening and HS2 tunnel preparatory work.
- Before Christmas, teams from across Network Rail collected 16 bags of food, toiletries and clothing which was kindly donated to the Euston Food Bank.

### Feedback survey

We'd really like to hear your views on this newsletter and what we could do to make it better. Scan the QR code or use the url <https://forms.office.com/e/hkxjzJuKHF> which will take you to an anonymous survey where you can provide your feedback.



## MEANWHILE USE

The Euston Partnership alongside HS2, Network Rail and Lendlease have been working hard to deliver a range of projects that will benefit the community while the construction of the HS2 station is paused. Information on some of the proposals in development are listed below. All sites are being regularly reviewed for any opportunities that may present themselves

### Meanwhile Use community fund launched

The Euston Meanwhile Use (EMU) Fund created by HS2 Ltd will provide grants of up to £10,000 for community-led projects.

The Euston Partnership is seeking applications for any projects that will benefit the local community, whether utilising any of the meanwhile spaces or by supporting communities that have been impacted by the pause in construction at Euston.

Please contact Nassar Ali at [Nassar.Ali@hs2.org.uk](mailto:Nassar.Ali@hs2.org.uk) to find out more and register your interest.



### Euston Square Gardens West

This year a temporary green space will open in Euston Square Gardens West, the location of the current interim taxi rank. A number of community engagement sessions took place in autumn 2023 to inform the design of this space, which will include lawns, planting and seating.

The design is still evolving and will be shared locally in the spring.

### National Temperance Hospital site

Plans to expand the temporary garden at the National Temperance Hospital site on Hampstead Road will kick off this year, with an ambition to open a temporary play space for children in time for the summer.

The space will be designed with the direct input from local young people. Further information will be shared as the design develops.

### Old Maria Fidelis School annex

There is a vacant space on the Old Maria Fidelis School site known as the annex. A local charity has been selected to run a range of community projects in partnership with other local community organisations. This will activate the site for community use while the work to construct the HS2 station is paused.

### Feedback survey

We'd really like to hear your views on this newsletter and what we could do to make it better. Scan the QR code or use the url <https://forms.office.com/e/hkxjzJuKHF> which will take you to an anonymous survey where you can provide your feedback.



## BUZZ ABOUT EUSTON



### New Euston Skills Centre officially open

Camden Council hosted a launch event on Thursday 8 February for the new Euston Skills Centre, celebrating the new facility which will deliver skills training to students from the local area. The centre will help with workforce requirements for infrastructure and housing in Camden, as well as large national projects such as HS2. The centre was constructed by the HS2 team, and its operation is part funded by HS2 Ltd.

Situated on the site of the old Maria Fidelis School overlooking the HS2 station site, students will benefit from close proximity to the HS2 project. HS2's station construction partner, MDjv, has left some utility services and systems exposed nearby which will act as a learning aid for students initially.

£4.1 million has been made available from HS2 Ltd for the Euston Skills Centre, both for its construction and operation. MDjv completed the construction of the centre which spans two floors with a mix of workshops and classrooms.

Camden Council is an official HS2 jobs brokerage partner, and working with HS2's contractors MDjv and Skanska Costain STRABAG joint venture.

There has already been success in schemes such as fast-track job training programmes which support local unemployed people into a new career.

For more information, visit [construction.camden.gov.uk](https://www.construction.camden.gov.uk), email [escinfo@camden.gov.uk](mailto:escinfo@camden.gov.uk) or call 020 7974 5161.



## Engagement to begin on Euston headhouse design

HS2 is inviting the local community in Camden and the wider public to give feedback on the designs for the Euston Portal headhouse to help shape the final design.

The Euston Portal Headhouse will provide emergency access to the tunnels between Granby Terrace and Mornington Street bridges. This is one of eight headhouses that will be built in Greater London above shafts leading down to the 26 mile-long tunnels below.

More information about upcoming events will soon be available on the HS2 in Camden website ([hs2.org.uk/in-your-area/local-community-webpages/hs2-in-camden](https://hs2.org.uk/in-your-area/local-community-webpages/hs2-in-camden)).

## Camden Youth Theatre wants you!

Camden Youth Theatre works with top professional theatre-makers, creating new shows and performing at two of London's best studio theatres (Camden People's Theatre and New Diorama Theatre) and they are currently opening up recruitment for new members from 2024.

The programme offers local 13 to 19-year-olds a free year-round creative programme and community with opportunities for film-making projects and performances at professional venues. To start, they're running an event on Sunday 25 February where young people can see a sharing of a new show and meet the current members and team, with an offer to then join.

Camden Youth Theatre is a nationally award-winning theatre company for teenagers that live or go to school in Camden. Sessions are free and run weekly during term time, with regular performance opportunities in professional venues including lead partners New Diorama Theatre, Camden People's Theatre and Old Diorama Arts Centre.

You don't need to have any prior experience to get involved. If you don't consider yourself a performer, writer or musician, but some or one of the above speaks to you – they would still love to hear from you!



### The Truth Experiment

A work in progress performance & taster session from Camden Youth Theatre.

**Date:** Sunday 25 February 24

**Time:** 7pm

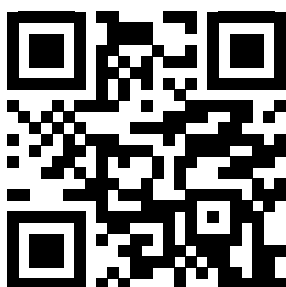
**Location:** Camden People's Theatre, 58-60 Hampstead Road, London, NW1 2PY

Please visit [cpttheatre.co.uk](https://cpttheatre.co.uk) for further information

The Euston Partnership was established to better integrate the three major projects at Euston: the construction of the central London terminus of HS2 and improved tube connections, Network Rail's redevelopment of the mainline station and the wider development of the urban environment managed by the Master Development Partner, Lendlease.

The Partnership brings together the three projects alongside Camden Council, Transport for London, the Greater London Authority and the Department for Transport - providing a single guiding mind for the entire Euston Campus to ensure a collective effort to drive forward the benefits for all those who live, work and travel through Euston.

# THE EUSTON PARTNERSHIP



Please contact us if you'd like a free copy of this document in large print, Braille, audio or easy read. You can also contact us for information in a different language.

This document is available as an accessible pdf online at [www.discovereuston.org.uk](http://www.discovereuston.org.uk)